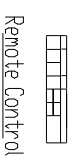
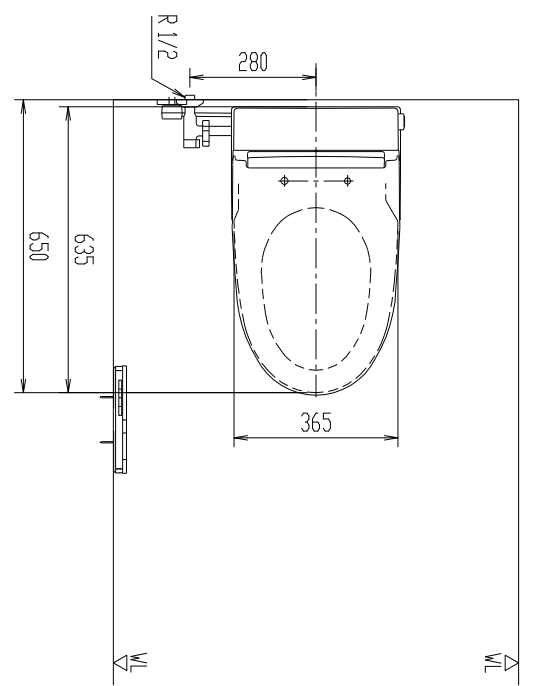


SATIS

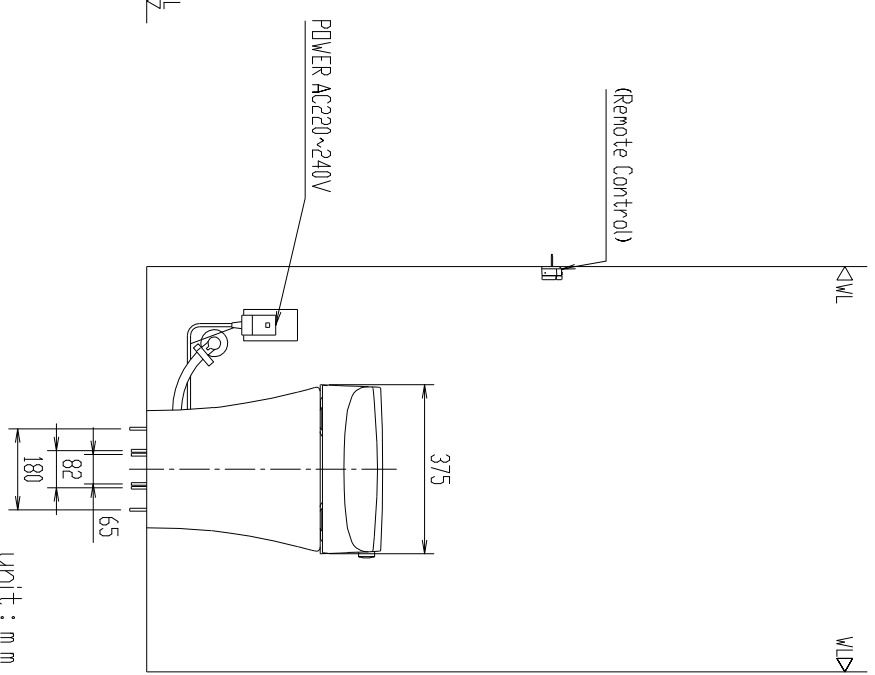
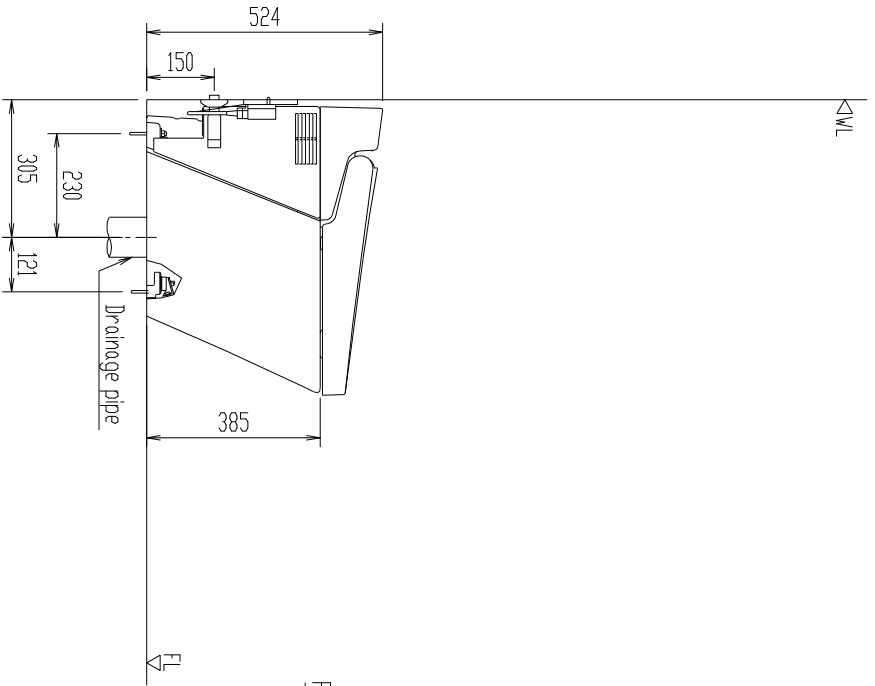
FLUSHING WATER VOLUME

FULL 4.5 LPF, PARTIAL 3.0 LPF

Part No.	Part name	QTY
YBC-S20S (305) -W	TOILET BOWL	1
DV-S618-VH-W	FUNCTIONING UNIT	1



Remote Control



unit : mm

* Operating pressure range is as below :
 Minimum-0.10MPa or more flowing
 (when water flow is 17L/min or more)
 Maximum-0.75MPa static

SCALE	TITLE
1:20	Production drawing per unit
DATE	
Jul 26, 2016	LIXIL Corporation